

MHB Sliding door

Single or bi-parting door | Up to 3 leaves per side | Flush fitted installation | Pocket or sidelight



Ultra-slim sightlines



Outstanding quality hardware

Overview

The MHB sliding door is the culmination of hundreds of years of craftsmanship infused with an unrivaled passion for steel and innovation. MHB creates handcrafted solid steel sliding doors with minimal sightlines, which guarantee an unobstructed vista. By using only high-quality elements an exceptional user experience is made possible.

- Leaf dimensions 66 mm (2 5/8") profiles: Width up to 2000 mm / 6' 6 3/4", height up to 3000 mm / 10'.
- Leaf dimensions 86 mm (3 3/8") profiles: Height up to 4300 mm / 14' 1 5/16".
- Maximum leaf weight: 400 kg / 881 lbs.
- Glazing 66 mm (2 5/8") profiles: up to 38 mm / 1 1/2".
- Glazing 86 mm (3 3/8") profiles: up to 58 mm / 2 5/16" (triple glazing).
- Flush fitted floor, ceiling and wall installation.
- Operating ease: +/- 50N / 11 lbf.
- Create harmony with identical detailing for all configurations in your project.
- Configure your unique sliding door with custom true divided or simulated divided glass partitioning.
- Apply any RAL colour or actual precious metals such as bronze for a unique and durable surface.

Performance



■ Thermal Transmittance

For 4000 x 3600 mm / 13' 1 1/2" x 12'
Up to U_w 1.2 W/ m² K (U_g = 1)
ISO EN 10077-1 + ISO EN 10077-2



■ Windload Resistance

Up to Class C5
NEN-EN 12210



■ Water Tightness

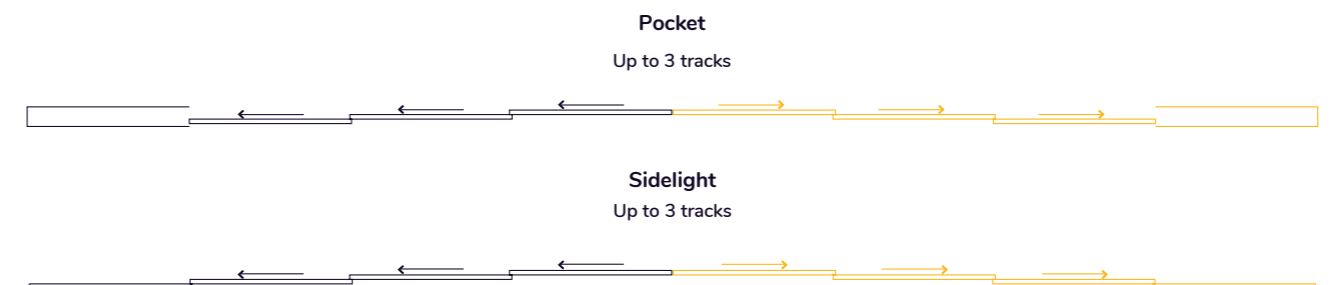
Up to 400 Pa (Class 7A)
NEN-EN 12208



■ Air Permeability

Up to Class 4
ISO NEN-EN 12207 + ISO NEN-EN 1026

Configurations



■ Unique aesthetics

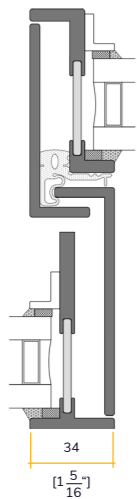
MHB can integrate additional horizontal or vertical muntins in the sliding door to maintain uniformity with other MHB products in your project.

■ Pure vista

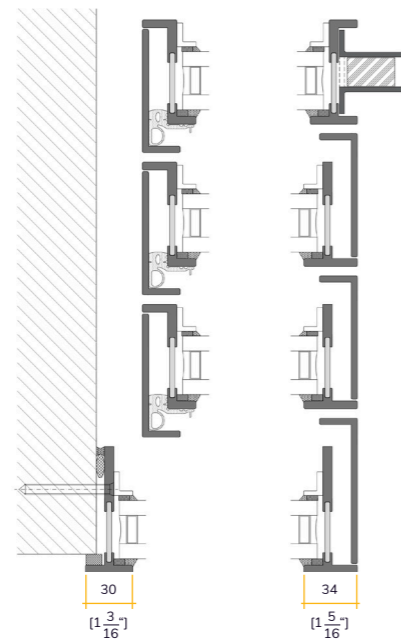
MHB's solid steel profile system enables ultra-slim sightlines without the need for structural strengthening or increased profile depth even when using dimensions of up to 3m / 10' (larger dimensions upon request).

■ Deepened profiles

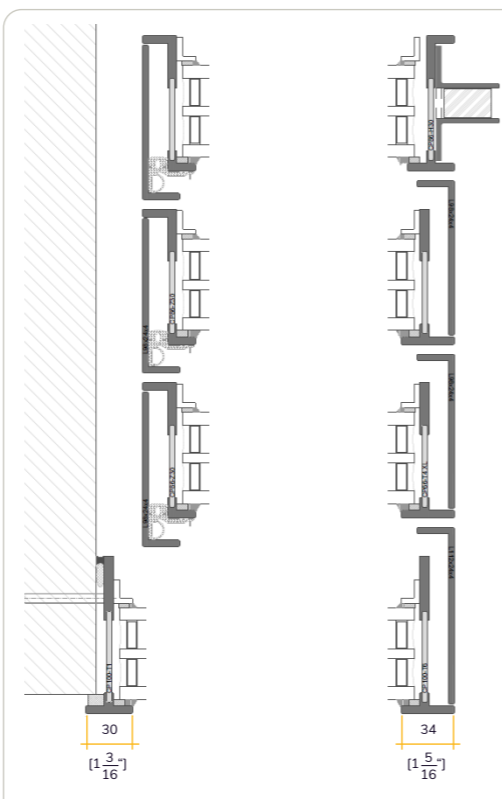
Deepened profiles are available which enable triple glazing and even extremer height than the standard depth profiles, whilst maintaining the 30 mm / 1 3/16" ultra-slim sightlines.



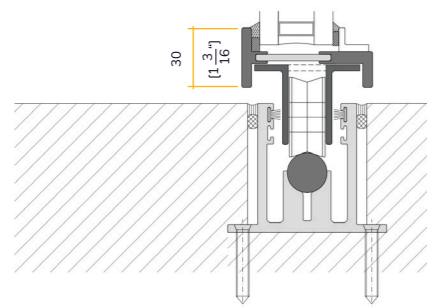
Horizontal view, meeting stile.



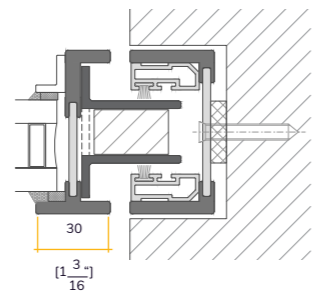
Triple track with sidelight, opened, 66 mm.



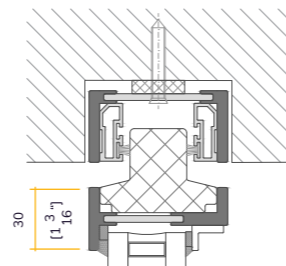
Triple track with sidelight, opened, 86 mm.



Single track, floor view.



Jamb receiver view.



Single track, ceiling view.



■ Frameless

Whenever the sidelight multi-leaf sliding door is opened, the leaves will line up perfectly, creating an almost invisible sightline combined with a completely flush fitted installation.

■ Superior quality

We use only the best materials in combination with our thermally broken solid steel profile, such as STST hardened rails and wheels. Ensuring outstanding aesthetics and an optimal user experience.

Project specific solutions

As we are the exclusive developer and manufacturer of all our profile systems, we pride ourselves on the unique ability to improve and adapt our products on a project specific basis. Should you have any project based wishes, please let us know and we will co-create the optimal solution, such as:

- Custom oversized sliding door dimensions.
- More than 3 tracks.
- Automated systems.
- Full frame build.
- Corner solution.
- Integrate operable elements.

As Masters of Steel we are happy to engineer any other custom demands you may have.