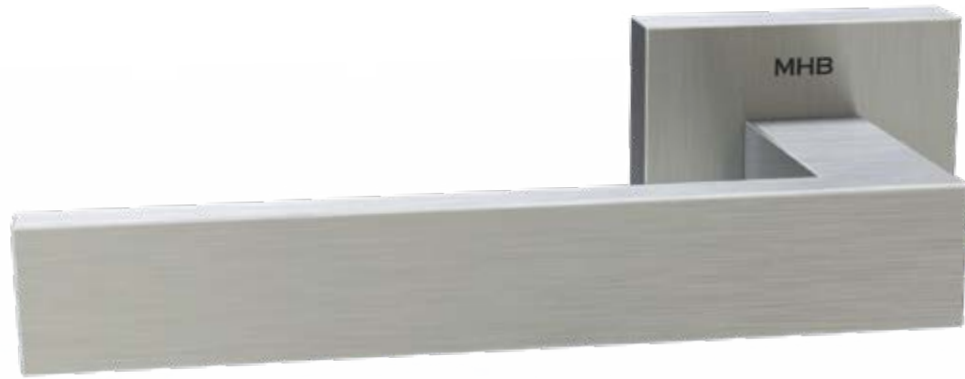


MHB 

MHB Hardware line



MHB

Hardware line

Order now



MHB Hardware line

High quality MHB hardware is available for all MHB concealed closing system configurations.

- Lock mullion doors
- Lockcase and floating lockcase doors
- Windows
- Tilt & Turn windows
- French doors

Unique concept



MHB Hardware line

MHB has created a high quality, solid line of handles and escutcheons with a unique concept:

All types of handles

Fit

All types of escutcheons

HANDLE



**Click here
for the video**

ESCUTCHEON

Unique concept



MHB Hardware line

One line

For all MHB doors, windows & multilock systems with concealed closing systems.

Multiple combinations

All handles fit all escutcheons.

Unique concept

MHB

MHB Hardware line

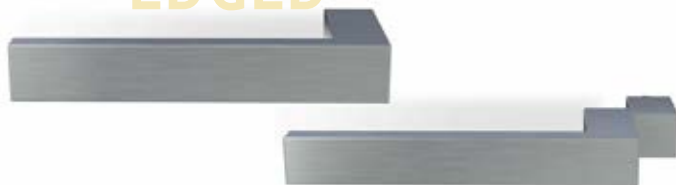
BAUHAUS



CONTEMPORARY



EDGED



CLASSIC



01



02



Bauhaus style



MHB

MHB Hardware line

Bauhaus Straight

- Brushed stainless steel
- Depth: 56 mm - 2 1/5"
- Length: 124.5 mm - 4 7/8"
- Diameter: 22 mm - 7/8"
- Powder coating: Possible

Bauhaus Cranked

- Brushed stainless steel
- Depth: 61 mm - 2 3/8"
- Length: 142.5 mm - 5 5/8"
- Diameter: 22 mm - 7/8"
- Powder coating: Possible

Contemporary style



MHB 

MHB Hardware line

Contemporary Straight

- Brushed stainless steel
- Depth: 68 mm - 2 $\frac{2}{3}$ "
- Length: 140 mm - 5 $\frac{1}{2}$ "
- Diameter: 20 mm - $\frac{3}{4}$ "
- Powder coating: Possible

Contemporary Cranked

- Brushed stainless steel
- Depth: 70 mm - 2 $\frac{3}{4}$ "
- Length: 159 mm - 6 $\frac{1}{4}$ "
- Diameter: 20 mm - $\frac{3}{4}$ "
- Powder coating: Possible

Edged style



MHB

MHB Hardware line

Edged Straight

- Brushed stainless steel
- Depth: 58.5 mm - 2 1/3"
- Length: 140 mm - 5 1/2"
- Thickness: 20x10 mm - 3/4" by 3/8"
- Powder coating: Possible

Edged Cranked

- Brushed stainless steel
- Depth: 70 mm - 2 3/4"
- Length: 160 mm - 6 1/4"
- Thickness: 20x10 mm - 3/4" by 3/8"
- Powder coating: Possible

Classic style



MHB

MHB Hardware line

Classic Straight

- Brushed stainless steel
- Depth: 69.5 mm - 2 $\frac{3}{4}$ "
- Length: 140 mm - 5 $\frac{1}{2}$ "
- Diameter: 20 mm - $\frac{3}{4}$ "
- Powder coating: Possible

Classic Cranked

- Brushed stainless steel
- Depth: 81 mm - 3 $\frac{3}{16}$ "
- Length: 159 mm - 6 $\frac{1}{4}$ "
- Diameter: 20x10 mm - $\frac{3}{4}$ " by $\frac{3}{8}$ "
- Powder coating: Possible

Round/oval escutcheons



MHB Hardware line



- Brushed stainless steel
- Depth: 13 mm - 1/2"
- Diameter: 57 mm - 2 1/4"
- Powder coating: Possible
- Sharp-edged $\leq R1$



- Brushed stainless steel
- Depth: 13 mm - 1/2"
- Height: 72 mm - 2 7/8"
- Width: 33 mm - 1 1/4"
- Powder coating: Possible
- Sharp-edged $\leq R1$



- Brushed stainless steel
- Depth: 18 mm - 11/16"
- Height: 117 mm - 4 19/16"
- Width: 24 mm - 15/16"
- Powder coating: Possible
- Sharp-edged $\leq R1$



- Brushed stainless steel
- Depth: 13 mm - 1/2"
- Height: 72 mm - 2 7/8"
- Width: 25 mm - 1"
- Powder coating: Possible
- Sharp-edged $\leq R1$

Square/rectangular escutcheons



MHB Hardware line



- Brushed stainless steel
- Depth: 13 mm - 1/2"
- Height: 54 mm - 2 1/8"
- Width: 54 mm - 2 1/8"
- Powder coating: Possible
- Sharp-edged $\leq R1$



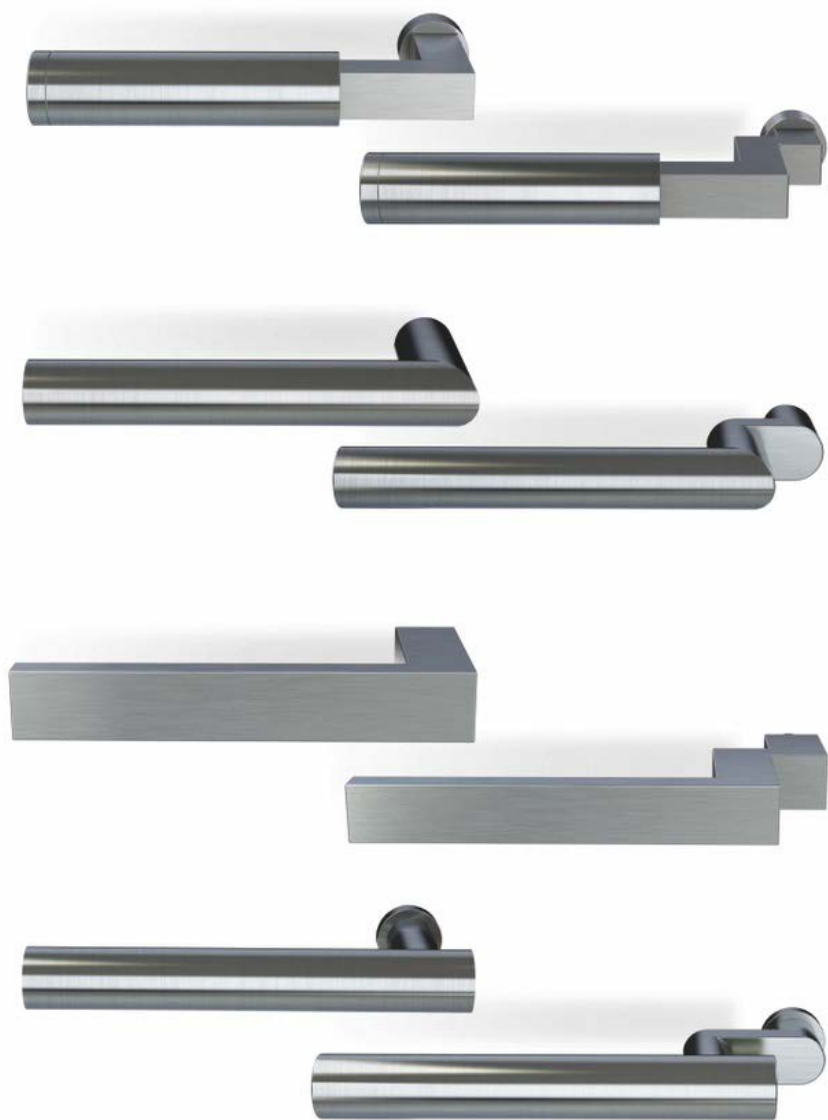
- Brushed stainless steel
- Depth: 13 mm - 1/2"
- Height: 72 mm - 2 7/8"
- Width: 33 mm - 1 1/4"
- Powder coating: Possible
- Sharp-edged $\leq R1$



- Brushed stainless steel
- Depth: 18 mm - 11/16"
- Height: 117 mm - 4 10/16"
- Width: 24 mm - 15/16"
- Powder coating: Possible
- Sharp-edged $\leq R1$



- Brushed stainless steel
- Depth: 13 mm - 1/2"
- Height: 68 mm - 11/16"
- Width: 25 mm - 1"
- Powder coating: Possible
- Sharp-edged $\leq R1$



MHB 

MHB Hardware line

MHB Hardware line Features

Key features

MHB 

MHB Hardware line

High quality & esthetic

- Unique concealed fixing system.
- Identical looks on the inside and outside.
- No cover rose needed.



Key features



MHB Hardware line

Solid stainless steel hardware

- Made from solid stainless steel AISI 316.
- Incredibly strong and solid hardware.
- Complying with RC 2 burglar resistance requirements (EN1627).

MHB
Hardware
escutcheon



Generic
punched
escutcheon



Key features



MHB Hardware line

Designed by MHB

The entire MHB hardware line is designed exclusively by MHB in order to comply with the highest quality standards.

In-house surface treatment

MHB hardware can be powder coated at MHB's in-house surface treatment facilities.





MHB Hardware line

Order now
Available worldwide